

NORTH-EAST QUARTER

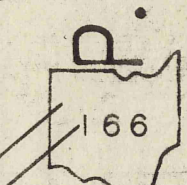
HAMB DEN T P.

NORTH-EAST QUARTER

L A K E C O U N T Y T H O M P S O N T P.

PARKER TRACT BOND TRACT

- #3 254-145 O.L. Luther 1A Lot 3
- #11 254-358 J.G. Shade " 10
- #12 257-276 J.M. Frey " 2
- #13 257-330 G.E. Grant " 5
- #14 263-60 R.K. Wilmot " 2
- #10 263-244 O. Chechura " 9



SCALE 1 in. = 10 ch.
 FEB 6, 1915
 JAN. 1, 1955



7 N.E.

SOUTH-WEST QUARTER

HAMB DEN T P.

SOUTH-WEST QUARTER

- #1 J. Deisz 193-500. 0.83A. O.L. NO. 22
- #2 A+E McClish 251-204, 293 0.17A. " 22
- #3 251-350 0.80A. " 22
- #4 F+E Pokorny 247-618 1.47A. " 21
- #5 R+R Fowler 251-142 1A. " 22
- #6 R+D Brest 257-621 " 22
- #7 R+J. Murphy 259-194 " 23

P.
T
O
N
D
O
R
A
H
C



- EVANS SUBDN 5-23 PLATS
- 1
 - 2
 - 3
 - 4
 - 5
 - 6
 - 7 E.L. Roshinski 1Ac. 259-316
 - 8 A+E. Farinacci 1Ac. 263-171
 - 9

SCALE 1"=10 CH.
JAN 1, 1955

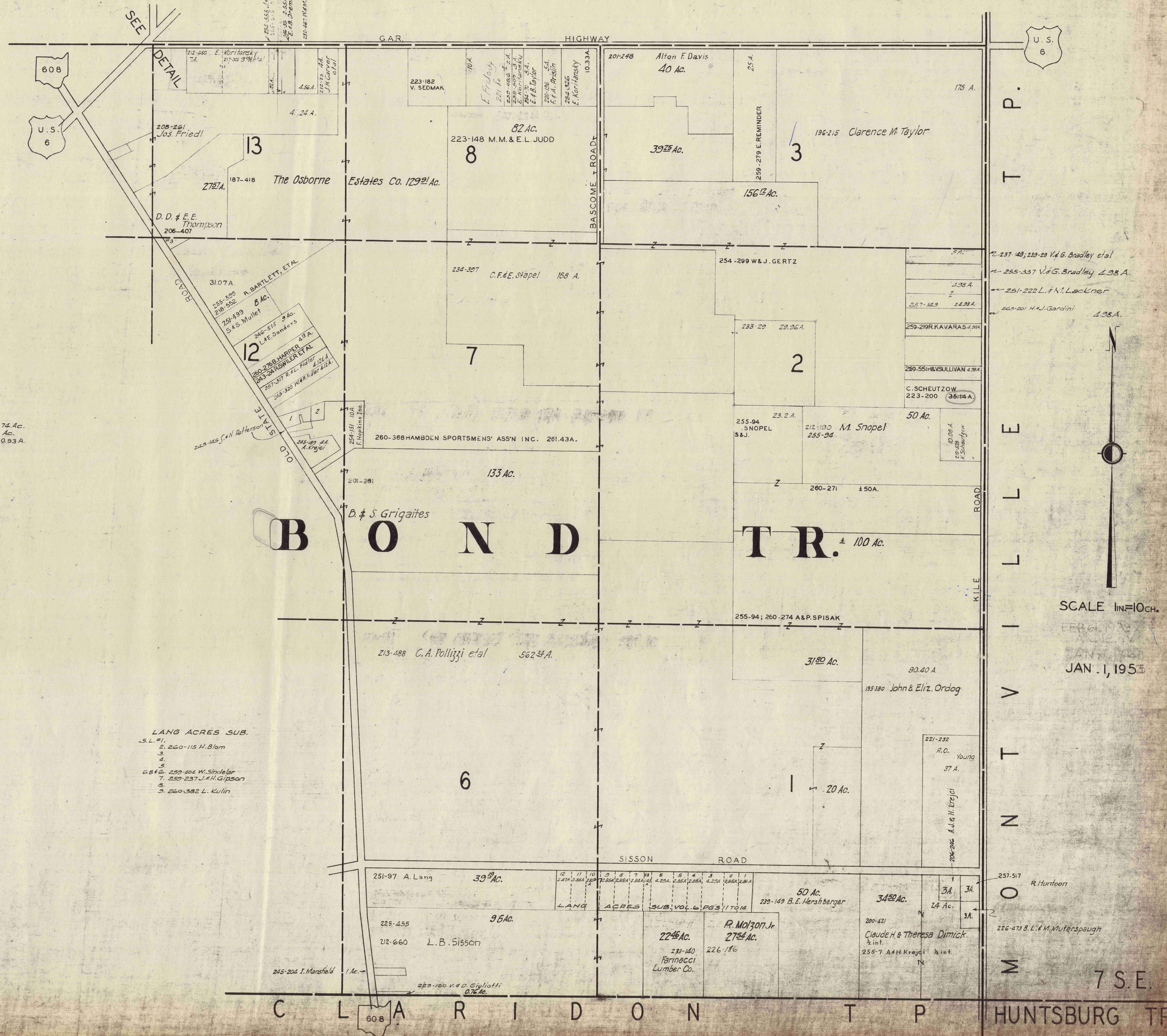
MUNSON TP.

7 SW

SOUTH-EAST QUARTER

HAMB DEN T P.

SOUTH-EAST QUARTER



- 1. 245-18 J. Grant 1.74 Ac.
- 2. 245-205 M. Grant 1 Ac.
- 3. 247-392 M. Schneider 0.93 A.

- LANG ACRES SUB.
- S.L. #1
 - 2. 260-115 H. Blom
 - 3
 - 4
 - 5
 - 6 259-504 W. Sindelar
 - 7. 259-237 J. H. Gipsen
 - 8
 - 3. 260-382 L. Kulin

SCALE 1"=10 CH.

JAN. 1, 1955

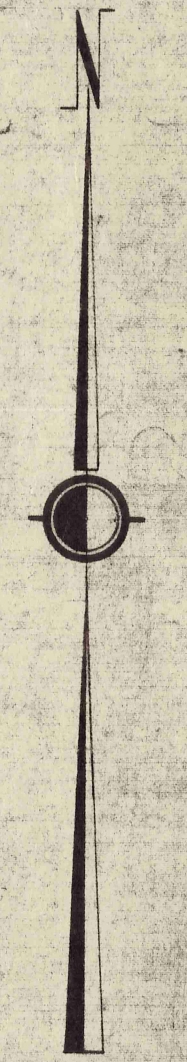
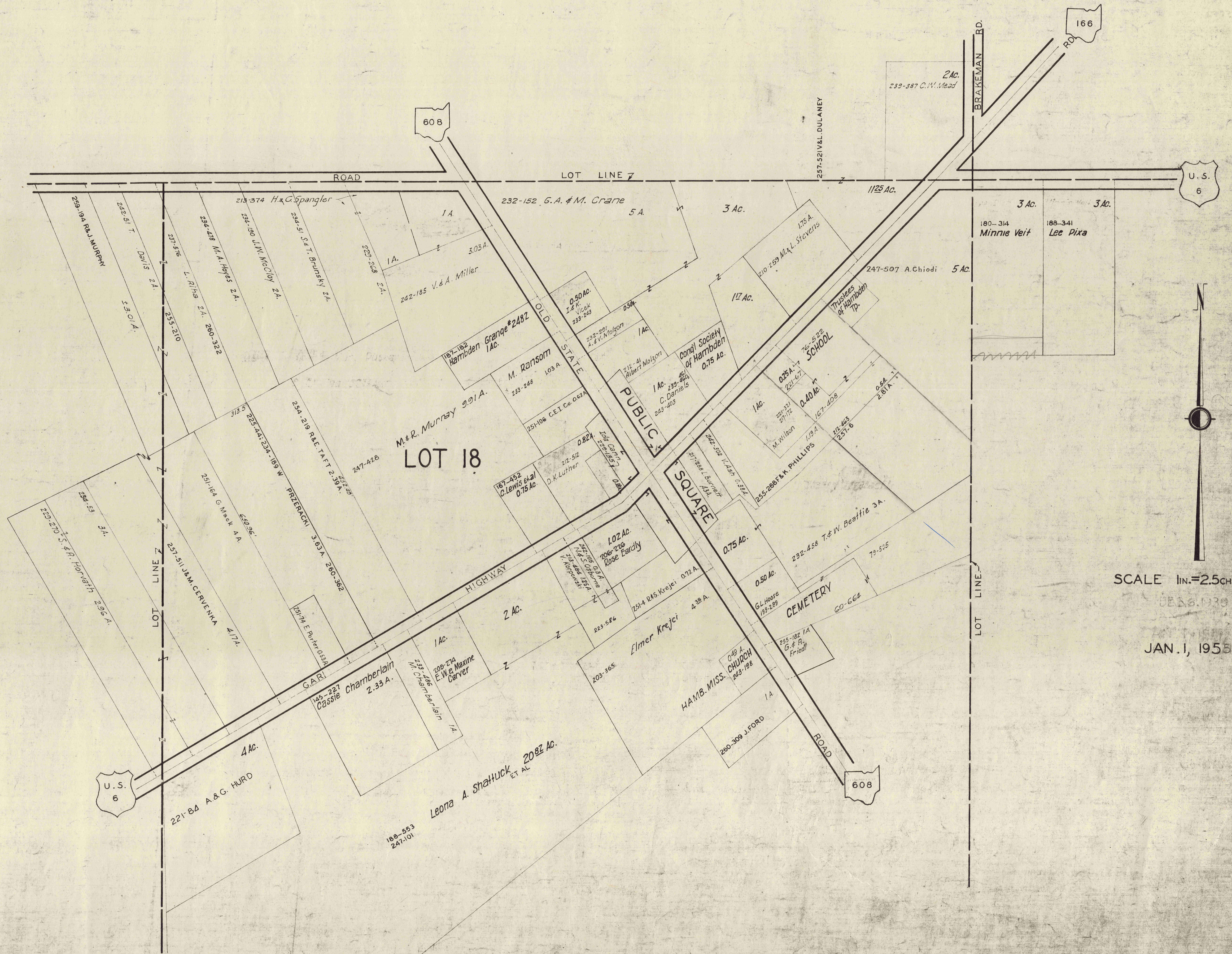
7 S.E.

HUNTSBURG TP.

HAMB DEN CENTER AND VICINITY

HAMB DEN TP.

HAMB DEN CENTER AND VICINITY



SCALE 1IN.=2.5CH. OR 165FT.

JAN. 1, 1955